

# 6HA2M-WHT

M-rating 257kW (350mph)

# YANMAR

MARINE  
PROPULSION  
DIESEL ENGINE



- 6-cylinder, direct injection, heat exchanger cooling.
- Turbocharger + intercooler models.
- Available either with marine gear or without marine gear.
- Conform to IMO Tier II emissions regulations.

## Specifications

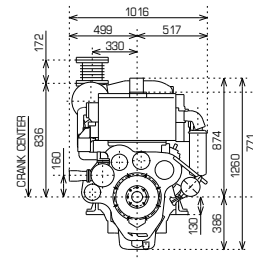
Model	6HA2M-WHT	
Number of cylinders	6 in-line	
Bore × stroke	mm	130 × 165
Displacement	lit.	13.140
Rated output	kW(hp)/rpm	M: 257(350)/1950
Combustion system	Direct injection	
Aspiration	Turbocharger + intercooler	
Starting system	Electric starting motor (24V 6.0kW)	
Cooling system	Heat exchanger	
Size of flywheel housing and flywheel	SAE #1 and 14 in.	
Dry mass (without marine gear)	kg	1455
Dimensions (L×W×H)	mm	1585×1016×1260

## Marine gear specifications

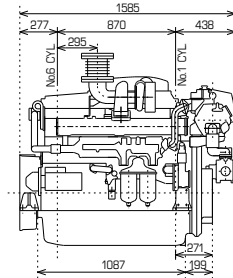
Engine model : 6HA2M-WHT					
Model	YX120		YX120L		
Type	Hydraulic multi-disc clutch				
Reduction ratio (Ahead)	2.03	2.57	3.04	3.55	4.00 4.59
Direction of rotation (propeller shaft)	Clockwise or counterclockwise				
Dry weight	kg	315		411	

## Dimensions Unit:mm

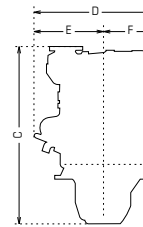
Engine only / Front view



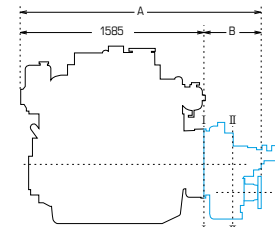
Engine only / Right side view



With YX120 gearbox / Front view



With YX120 gearbox / Left side view



	A	B	C	D	E	F
6HA2M-WHT × YX-120	2005	420	1272	1016	499	517
6HA2M-WHT × YX-120L	2039	454	1384	1016	499	517

— Marine gear

## Performance curves

